

# Sintech Electronics

Company Profile

# Profile Content

- Company Introduction

- History
- Primary Business
- Mission & Customers

- Our Factory

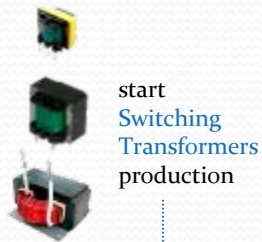
- Location
- Investment and Capacity
- Organization Structure

- Key Strengths

- Quality
- Long-term
- Full system Test



# History



start  
Switching  
Transformers  
production

start  
Switching  
Power Supplies  
production



Starts developing  
LED drivers



Starts co-operation with  
JAPAN KAMI DENSHI



SINTECH ELECTRONICS  
established in Zhuhai



HANG FAI TRADING CO.  
established in Hong Kong

new factory in  
Xiangzhou, Zhuhai



usage of  materials

certified  
GMC member



# Primary Business

- Power Supplies
  - Power Adaptors
  - LED drivers
- Transformers
  - Mini, Power
  - Switching, Lead-wire
- PCB Assembly
  - Remote Control PCB
  - Channel Tracer & Controller



# Our Mission, Our Customers

- Our mission at Sintech is to continue meet the changing needs of our customers, through our **commitment of higher quality**, stronger technical support, more reliable distribution and better service.
- Many of our **satisfied customers** will readily attest to our commitment.

**Panasonic**

**Mitsubishi**

**Hitachi**

**Omron**

**Konica Minolta**

**Kyocera Mita**

**Fujikura**

**Toshiba**

**Toto**

**Inax**

**NEC**

**Sony**

**Yamaha**

**Iwatsu**

**Toyota**

**Daikin**

**Ricoh**

**Foster**

**Fuji General**

**Sharp**

**JVC**

**Secom**

**Kami Denshi**

**Light engine**

**Optiled**

**Yamada Shomei**

**Andes**

# Connected to the World



- **via Airports**
  - Guangzhou : 90 mins
  - Shenzhen : 120 mins
  - Zhuhai : 45 mins
  - Hong Kong : 60 mins
- **via Expressways**
  - Shenzhen : 120 mins
  - Guangzhou : 50 mins
  - Zhongshan : 30 mins
  - Dongguan : 60 mins
- **via Sea Ports**
  - Zhuhai : 20 mins

# Factory Background



- Capital Investment
- Compliance
- Machinery

HK\$50,000,000

ISO-9001 | ISO-14001 | GMC

Winding | Welding | Injection | Varnish Oven  
Metal Punch | Wave Soldering | SMT | X-Ray  
Optical Solder Checker | ICT | EMI Tester

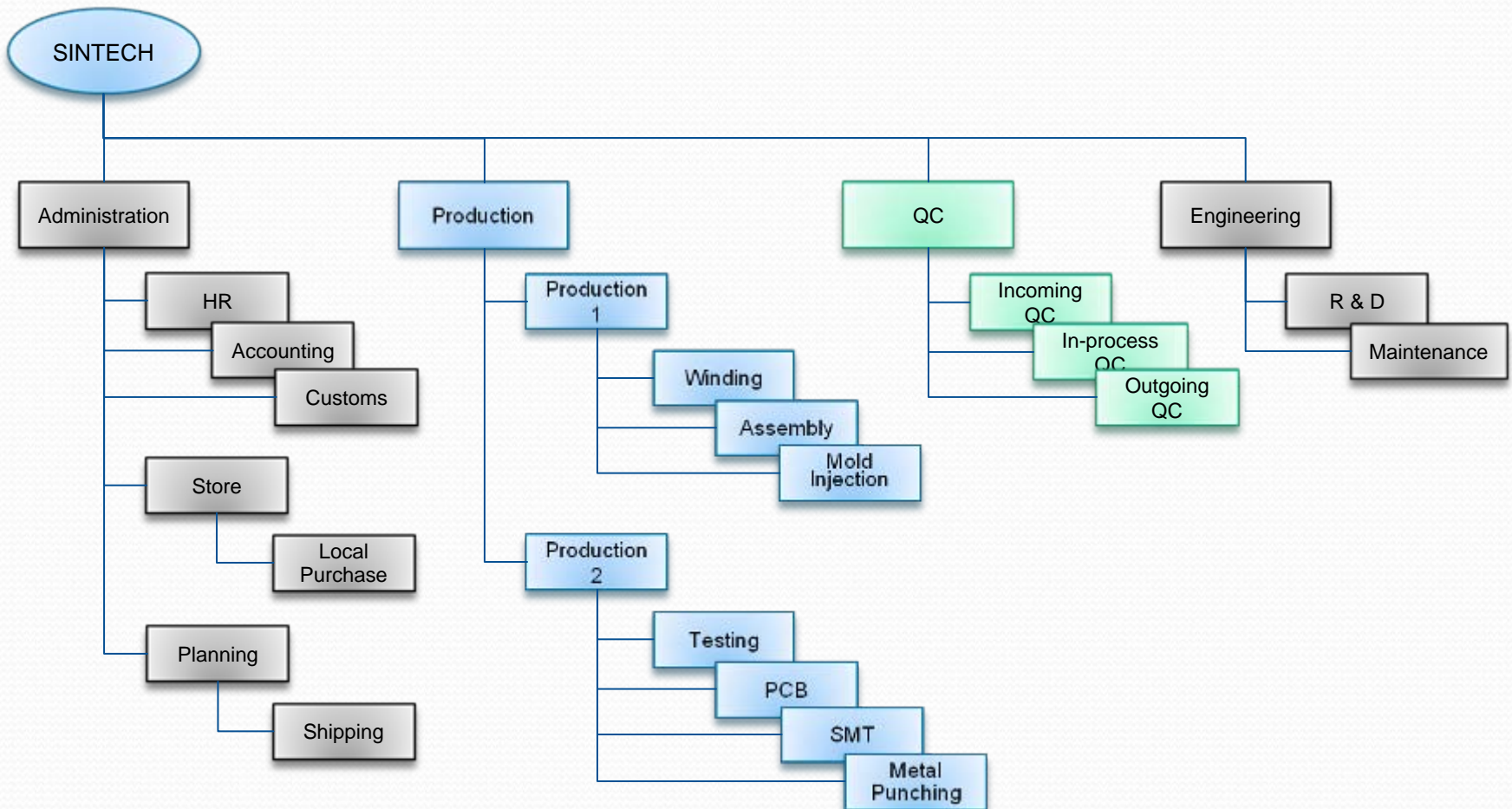


- Capacity
- Manpower

15 million pcs / Year

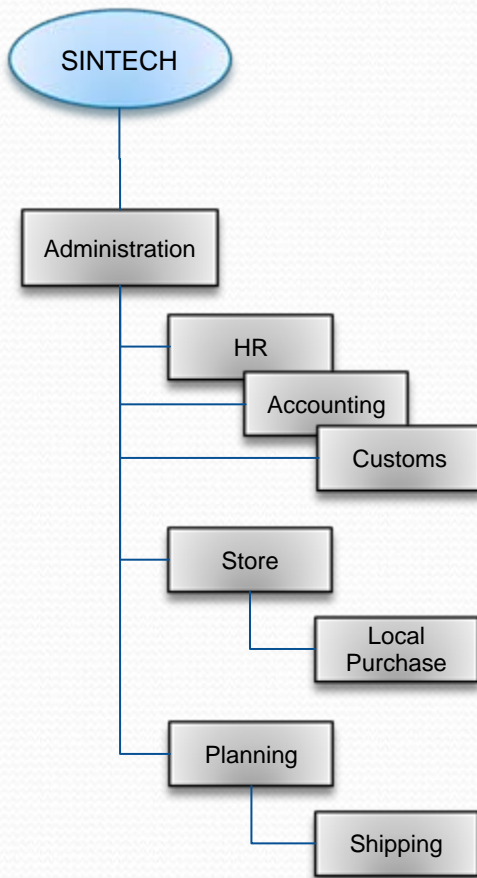
90+ Management 400+ Workers

# Organization Chart

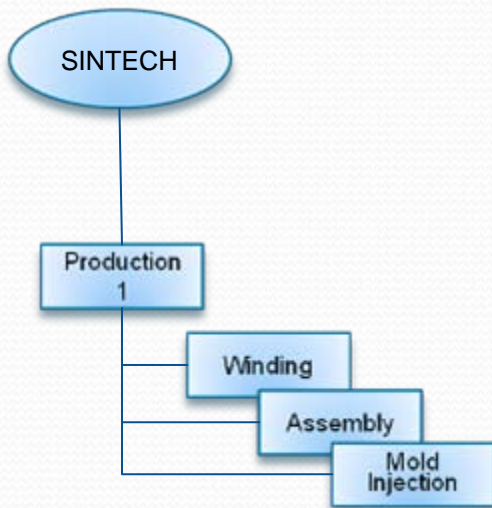




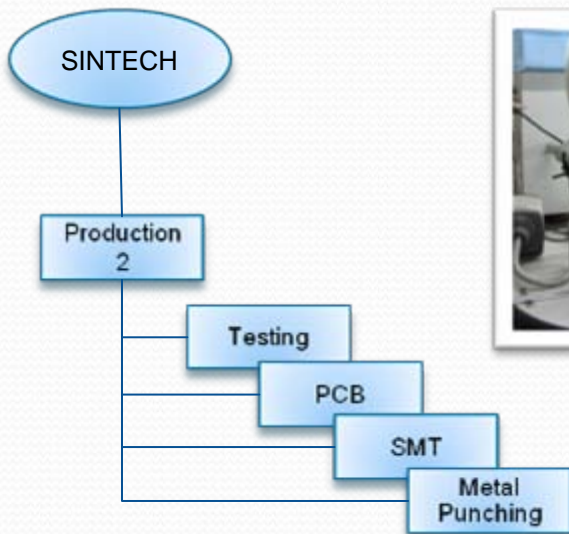
# Organization Chart



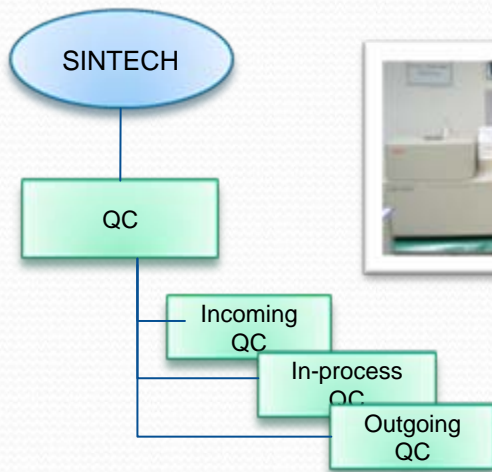
# Organization Chart



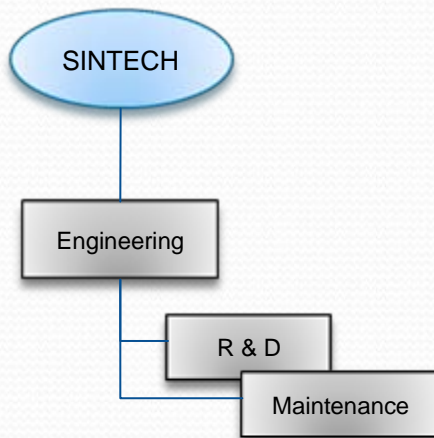
# Organization Chart



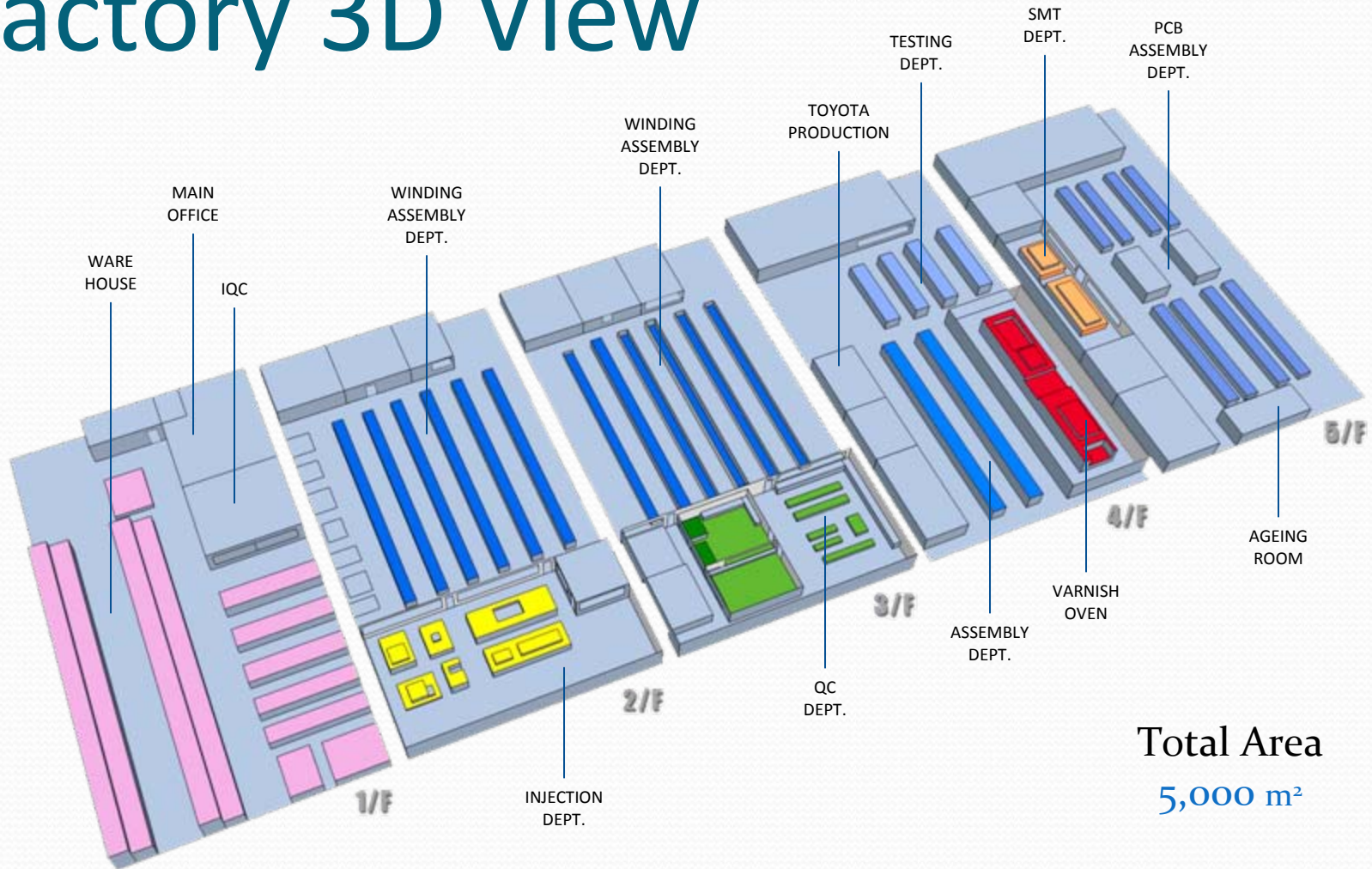
# Organization Chart



# Organization Chart



# Factory 3D View



# Key Strengths

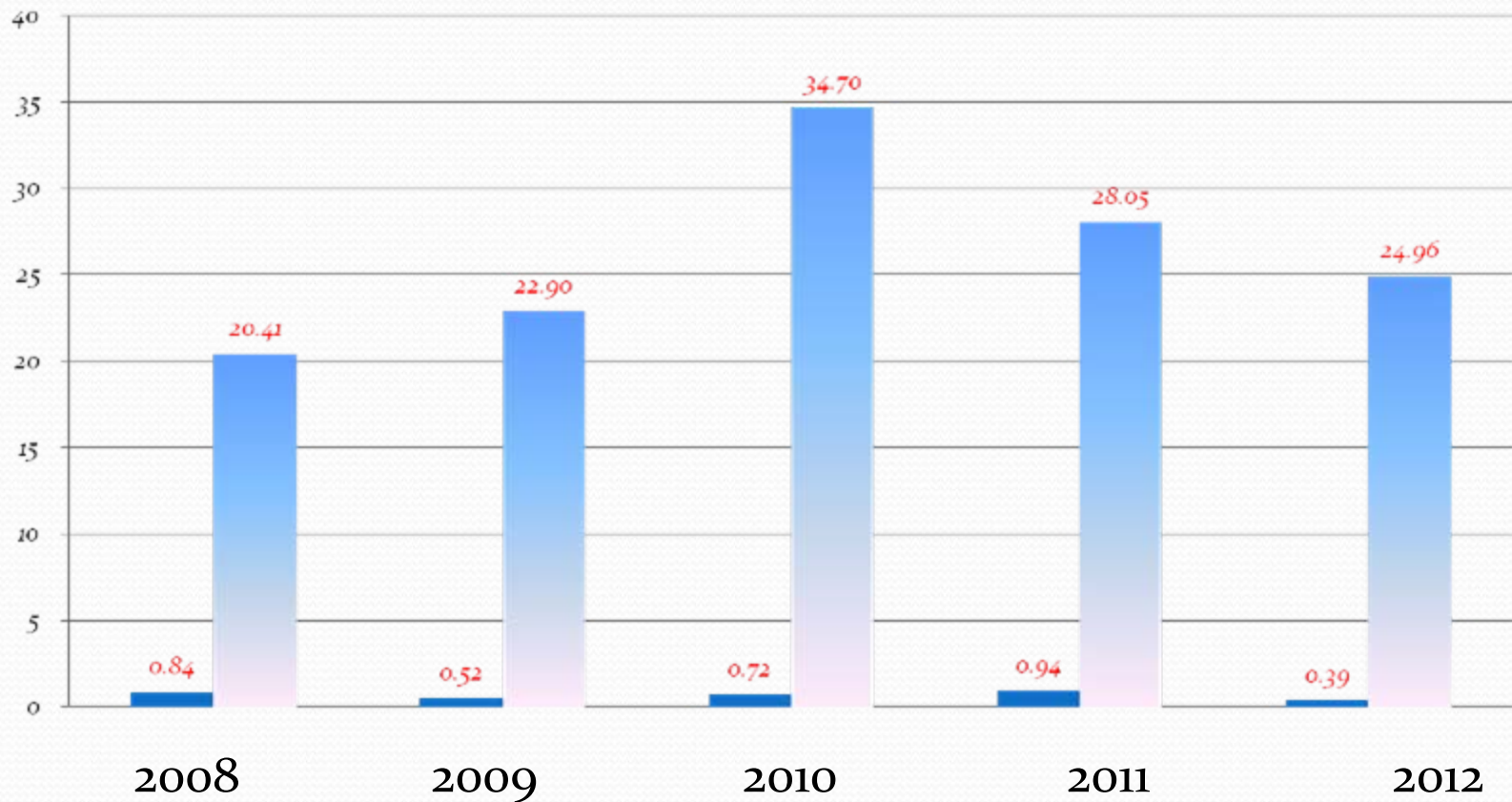
QUALITY

- More than 500 end-customers;  
Hence the accumulation of more than **20+ years** of **factory audit experience**.
- **Long term** partnership with our customers.
- 80% export to Japan;  
Able to fulfill **stringent quality** requirements in the Japanese market.
- **Small lot**-sized production with **short lead-time**.
- Our PSU go through **full system test** and 100% aging.



# Quality Achievement

Functional Claim by Customers (Average Pieces Per Million)





**Thank you !**