



# Company Profile

PT GALVA KAMI INDUSTRY



## Location

### MAJALENGKA

Blok Pasantren, Ds. Lojikobong  
Kec. Sumberjaya - Majalengka  
West Java – Indonesia  
45455

# About Us

## PT Galva

- Established on 1953
- Our product offering is focused around the following categories:
  - Commercial Display
  - Computers, Projectors & Accessories
  - Content Creation
  - Document Solution
  - Fire Alarm
  - Medical
  - Pro Audio
  - Public Address and Communication
  - Security System



# About Us

## Director on Board PT Galva





# About Us

## Kami Electronics World Wide

**KAMI ELECTRONICS IND. CO., LTD.**

**CHINA**  
珠海新特电子有限公司 (中国)  
ZHUHAI SINTECH ELECTRONICS CO.LTD.

**HONG KONG**  
ハンファイトレーディング (香港)  
HANG FAI TRADING CO.

**JAPAN**  
東京営業所 (東京)  
TOKYO BRANCH (TOKYO)

**CHINA**  
HONG KONG

**INDONESIA**  
ガルバ加美電子工業株式会社 (インドネシア)  
P.T.GALVA KAMI IND.

**SINGAPORE**  
シンガポール加美電子工業私人有限公司 (シンガポール)  
SINGAPORE KAMI ELECTRONICS IND.PTE.LTD.

**INDONESIA**  
本社 (大阪)  
HEAD OFFICE (OSAKA)

**INDONESIA**  
名張工場 (三重)  
NABARI FACTORY (MIE)





# About Us

## PT Galva Kami Industry

- Established on 1994
- Joint venture company,  
**PT Galva and Kami Electronics Ind. Co. Ltd**



# About Us

## PT Galva Kami Industry

- Status : PMA (Indonesia – Japan)
- Core Business : Manufacture of Electronics Transformer
- Stock : PT Galva  
Kami Electronics Ind. Co. Ltd
- Location : Blok Pasantren, Ds. Lojikobong, Kec. Sumberjaya  
Majalengka – West Java
- Area : 20,000 m<sup>2</sup>



# About Us

## Commissioners and Directors

- President Commissioner : Tsunetoshi Tomihiro
- Commissioner : Oki Widjaja
- President Director : Teng Timothy King
- Directors : Takatoshi Shoji  
Yoshifumi Tanioku  
Junji Tomihiro  
Santoso Gunawan  
Tan Maria Fransiska



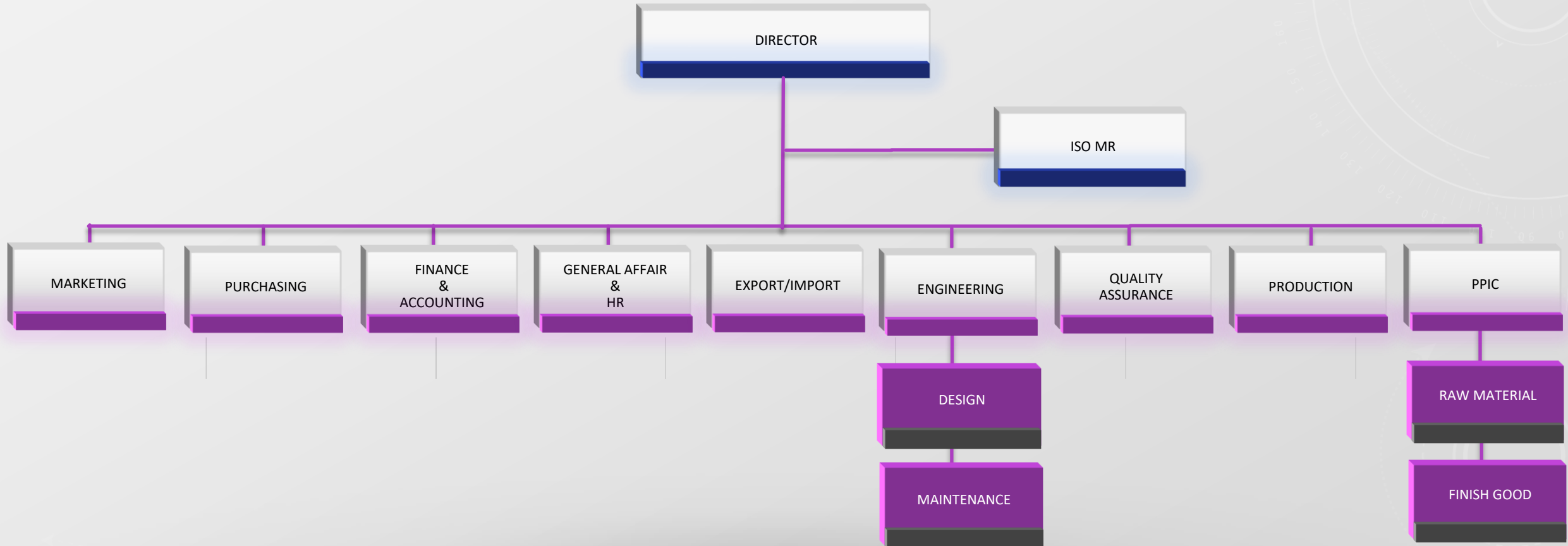
# About Us

## Commissioners and Directors





# Organization Chart





# About Us

## Our Employee (374)

- Production : 282
- Quality Assurance : 16
- Engineering : 10
- General Affair & HRD : 23
- Finance & Accounting : 5
- PPIC/ Warehouse : 27
- Purchasing : 4
- Marketing : 4
- Export/ Import : 3



# About Us

## Our Facilities

- POWER  
865 KVA, from PLN (Government Electrical)
- PRODUCTION CAPACITY :  
50,000 pcs/day ( Shift 1 + Shift 2 )
- PRODUCTION ORDER :  
28,000 pcs/day





# About Us

## Our Factory Location



JAKARTA

JAKARTA

MAJALENGKA

JAVA ISLAND





# Our Factory



FACTORY BUILDING





# Our Factory



PRODUCTION



# Our Factory



PRODUCTION





# Our Factory



PRODUCTION





# Our Factory



WAREHOUSE



# Our Promise

QUALITY : ISO 9001:2015  
ENVIRONMENT : ISO 14001:2015

- **QUALITY**

High Quality Product

- **COST**

Product With Competitive Price

- **DELIVERY**

On Time Product Delivery

- **ENVIRONMENT & SAFETY**

Safety and Healthy Working Environment





# Our Promise

QUALITY : ISO 9001:2015

ENVIRONMENT : ISO 14001:2015





# Our Production Facilities



WINDING MACHINE



SOLDERING MACHINE



PIN INSERTION MACHINE

# Our Production Facilities

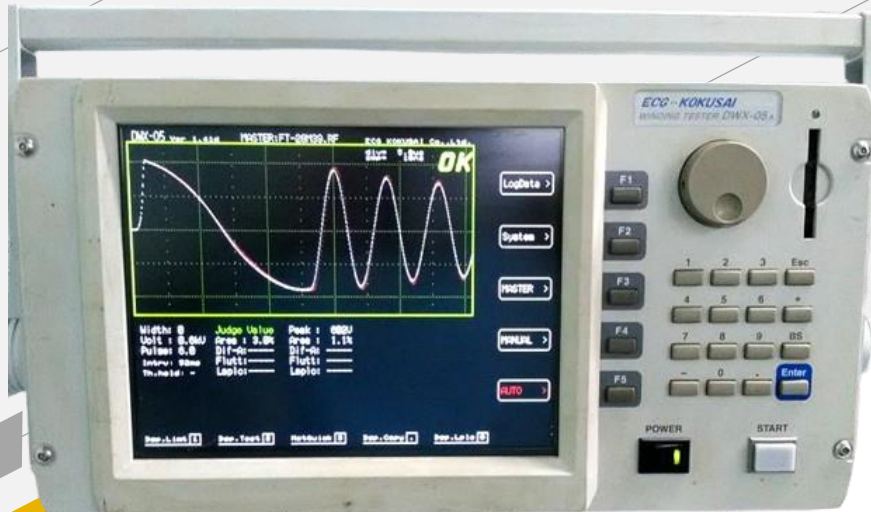


VARNISH OVEN DRYER MACHINE



LASER PRINTING MACHINE

# Our Production Facilities



TESTING MACHINE



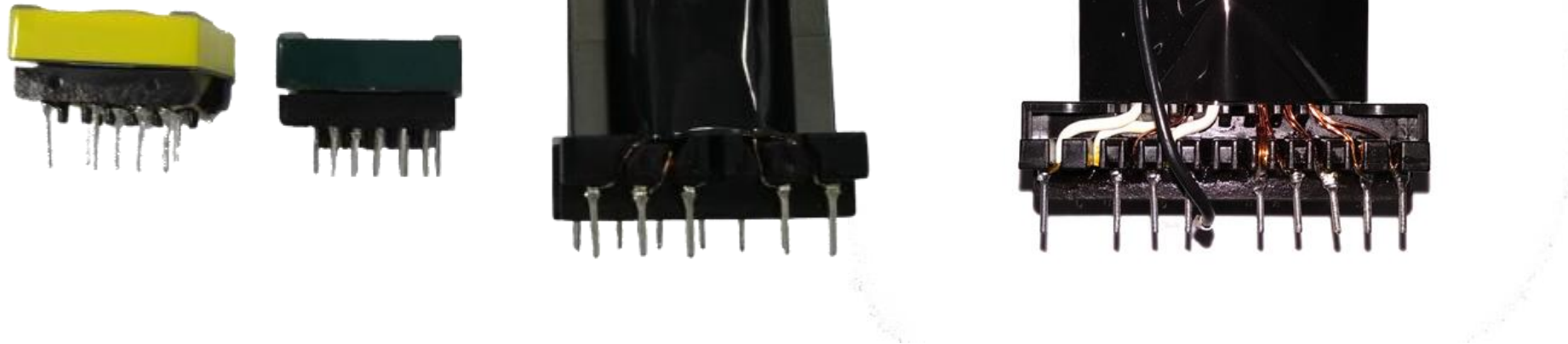


# Our Production Facilities



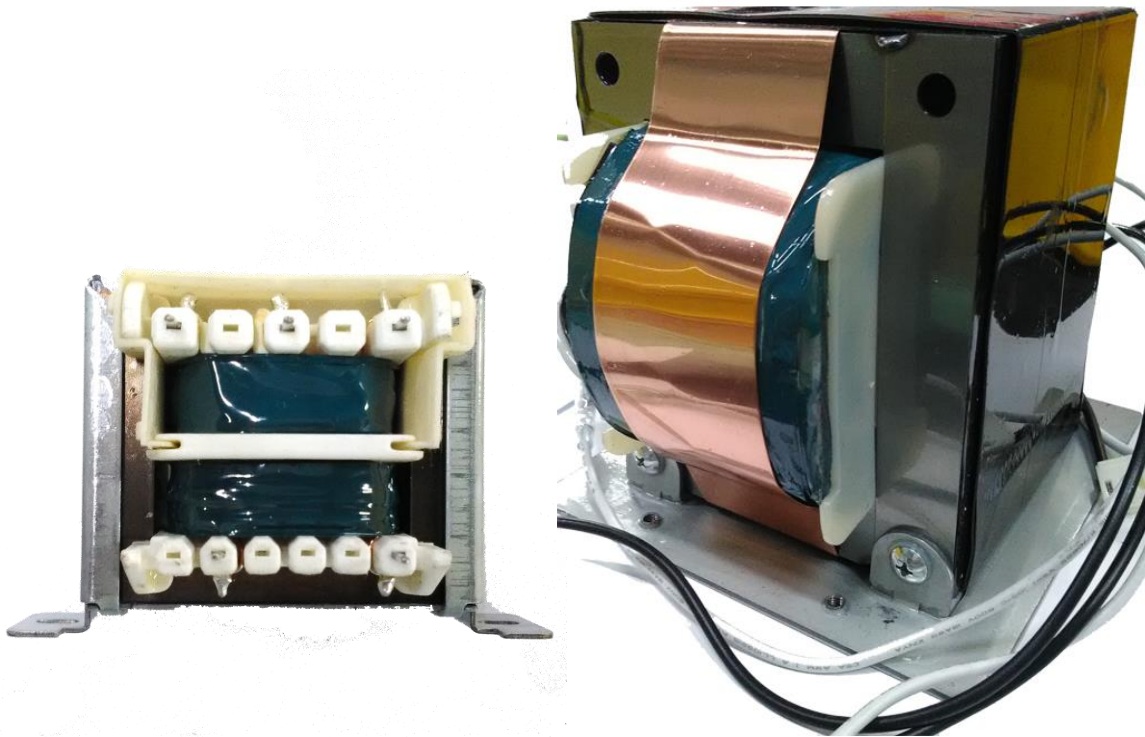
X-RAY TESTING MACHINE

# Our Products



SWITCHING TRANSFORMER

# Our Products



POWER TRANSFORMER



MATCHING TRANSFORMER



CHOKER COIL





# Our Customers

PT. TOA GALVA INDUSTRY

PT. JAPAN KAMI ELECTRONICS

PT. YAMAHA ELECTRONIC MANUFACTURING IND.

PT. YAMAHA MUSIC MANUFACTURING ASIA

PT. PANASONIC MANUFACTURING INDONESIA

PT. SINGAPORE KAMI ELECTRONICS



# Thank You

